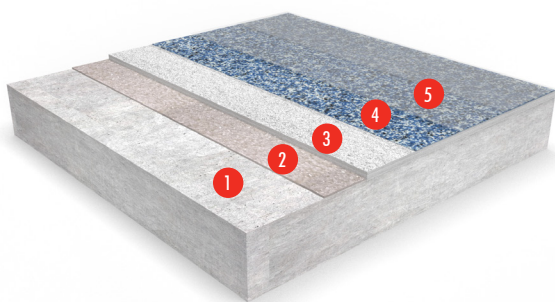


Peran STB Structure (3 mm)

A hard wearing, decorative resin floor with colour stable quartz granules in a clear resin binder.



- 1 Prepared Substrate
- 2 Peran STC, scattered with coloured quartz
- 3 Peran STC and STC filler, scattered with coloured quartz
- 4 Peran STC
- 5 Flowseal PU Matt (Ultra)



Attractive:

Decorative floor finish that delivers the wow-factor underfoot.



Wear Resistant:

Excellent general wear, tear, impact and chemical resistance underfoot.



Slip Resistant:

Slip resistant textured finish, ideal for areas that are often wet underfoot.

FIRE RESISTANCE	
EN 13501-1	B _{fl} -s1
WEAR RESISTANCE	
EN 13892-5	RWA10 (< 10 cm ³)
TEMPERATURE RESISTANCE	
Tolerant up to 70°C (intermittent) or 50°C (sustained)	
IMPACT RESISTANCE	
EN ISO 6272	IR10 (10 Nm)
BOND STRENGTH	
EN 13892-8	B2.0 (≥ 2.0 MPa)
WATER PERMEABILITY	
Karsten Test	Nil (Impermeable)
VAPOUR PERMEABILITY	
ASTM E96:90	1.36 g / m ² / mm / 24 hrs
SLIP RESISTANCE*	
EN 13036-4 (typical values for 4-S rubber slider)	Dry >40 low slip potential
COMPRESSIVE STRENGTH	
EN 13892-2	>40 N/mm ²
FLEXURAL STRENGTH	
EN 13892-2	15 N/mm ²
TENSILE STRENGTH	
BS 6319-7	10 N/mm ²

SPEED OF CURE	10°C	20°C	30°C
Light Traffic	36 hrs	24 hrs	16 hrs
Full Traffic	72 hrs	48 hrs	36 hrs
Full Chemical Cure	12 days	7 days	4 days

The figures above are typical properties achieved in laboratory tests at 20°C and at 50% Relative Humidity.

Model Specification

System	Peran STB Structure
Finish	Matte
Thickness	3 mm

Preparatory work and application in accordance with manufacturer's instructions.

Products Included In This System

Primer	Peran STC @ 0.25 kg/m ²
Scatter	Coloured Quartz Size 7/8 @ 0.5 kg/m ²
Bodycoat	Peran STC @ 0.75 kg/m ² mixed with: Compact White (STC Filler) @ 0.75 kg/m ²
Scatter	Coloured Quartz Size 8 @ 3.5 kg/m ² (full blind)
Sealer	Peran STC @ 0.4 to 0.6 kg/m ² (in two or more coats dependant on the surface texture required) and optional Flowseal PU Matt (Ultra) @ 0.08 kg/m ²

Detailed application instructions are available upon request.

Commercial

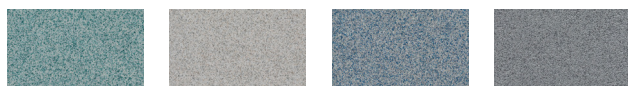


Beige
101

Biscuit
102

Black
901

Dark Grey
703



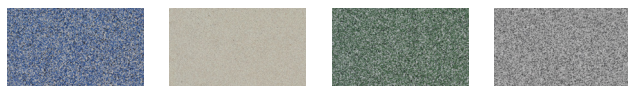
Grass Green
601

Light Grey
701

Mid Blue
501

Mid Grey
702

Industrial

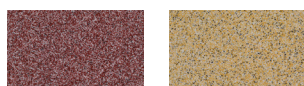


Blue
502

Cream
103

Green
602

Grey
704



Red
301

Yellow
104

The applied colours may differ from the examples shown.
For a full colour chart and samples, contact your local CPG office.

Substrate Requirements

Concrete or screed substrate should be a minimum of 25 N/mm², free from laitance, dust and other contamination. The substrate should be dry to 75% RH as per BS8203 (or 4.5% on Tramex) and free from rising damp and ground water pressure. If no damp proof membrane is present Hydraseal DPM can be incorporated directly beneath the Peran STB system.

Installation Service

The installation should be carried out by a CPG approved contractor with a documented quality assurance scheme. Obtain details of our approved contractors by contacting our customer service team or enquiring via our website www.flowcrete.eu.

Aftercare, Cleaning & Maintenance

Clean regularly using a single or double headed rotary scrubber drier in conjunction with a mildly alkaline detergent.

Note

No resin system is totally colour fast and may change colour over time (exhibits a yellowing effect). Colour change depends on the UV light and heat levels present and hence the rate of change cannot be predicted. This is more noticeable in very light colours but does not compromise the product's physical or chemical resistance characteristics. We have endeavoured to adopt colours within our standard range which minimise this change.

Intensively coloured products (e.g. hair colourants, medical disinfectants etc.) and plasticizer migration (e.g. from rubber tyres) can lead to irreversible discolouration in the surface. Please contact our Technical Services Department for further advice.

Environmental Considerations

The finished system is assessed as nonhazardous to health and the environment. The long service life and seamless surface reduce the need for repairs, maintenance and cleaning.

Environmental and health considerations are controlled during manufacture and application of the products by Tremco CPG staff and fully trained and experienced contractors.

Important Notes

CPG products are guaranteed against defective materials and manufacture and are sold subject to our standard 'Warranty, Terms and Conditions of Sale', copies of which can be obtained on request. Warranty does not cover suitability, fit for purpose or any consequential or related damages. Please review warranty in detail before.

*The slipperiness of flooring materials can change significantly due to the installation process, after short periods of use, due to inappropriate maintenance, longer-term wear and/or surface contaminants (wet or dry). Textured systems are recommended to meet slip resistance value requirements for wet conditions and/ or surface contaminants (wet or dry). Please contact our Technical Department for further details and specifications.

Tremco CPG's products are guaranteed against defective materials and manufacture and are sold subject to its standard Terms and Conditions of Sale, copies of which can be obtained on request. Any suggested practices or installation specifications for the composite floor or wall system (as opposed to individual product performance specifications) included in this communication (or any other) from Tremco CPG constitute potential options only and do not constitute nor replace professional advice in such regard. Tremco CPG recommends any customer seek independent advice from a qualified consultant prior to reaching any decision on design, installation or otherwise.

System Datasheet written for Tremco CPG. Please consult Technical Team in your own country region for specific details. [04/09/23, 01 UK]